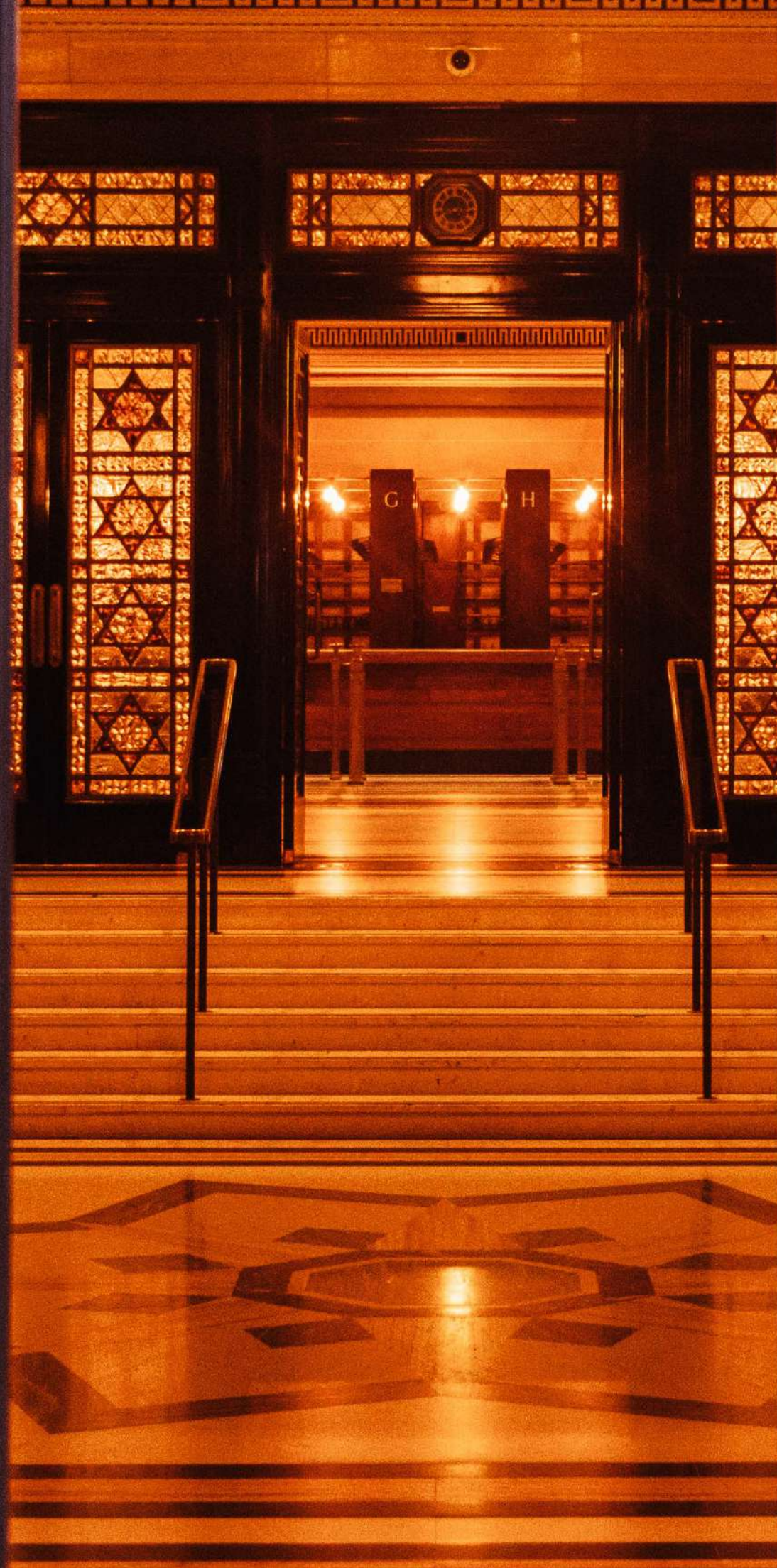


60 GREAT QUEEN ST.



ICONIC ELEGANCE IN THE HEART OF COVENT GARDEN

INTRODUCTION
03

ABOUT US
04

HISTORY
05

SPACES
08

VENUE HIRE
21

SUPPLIERS
23

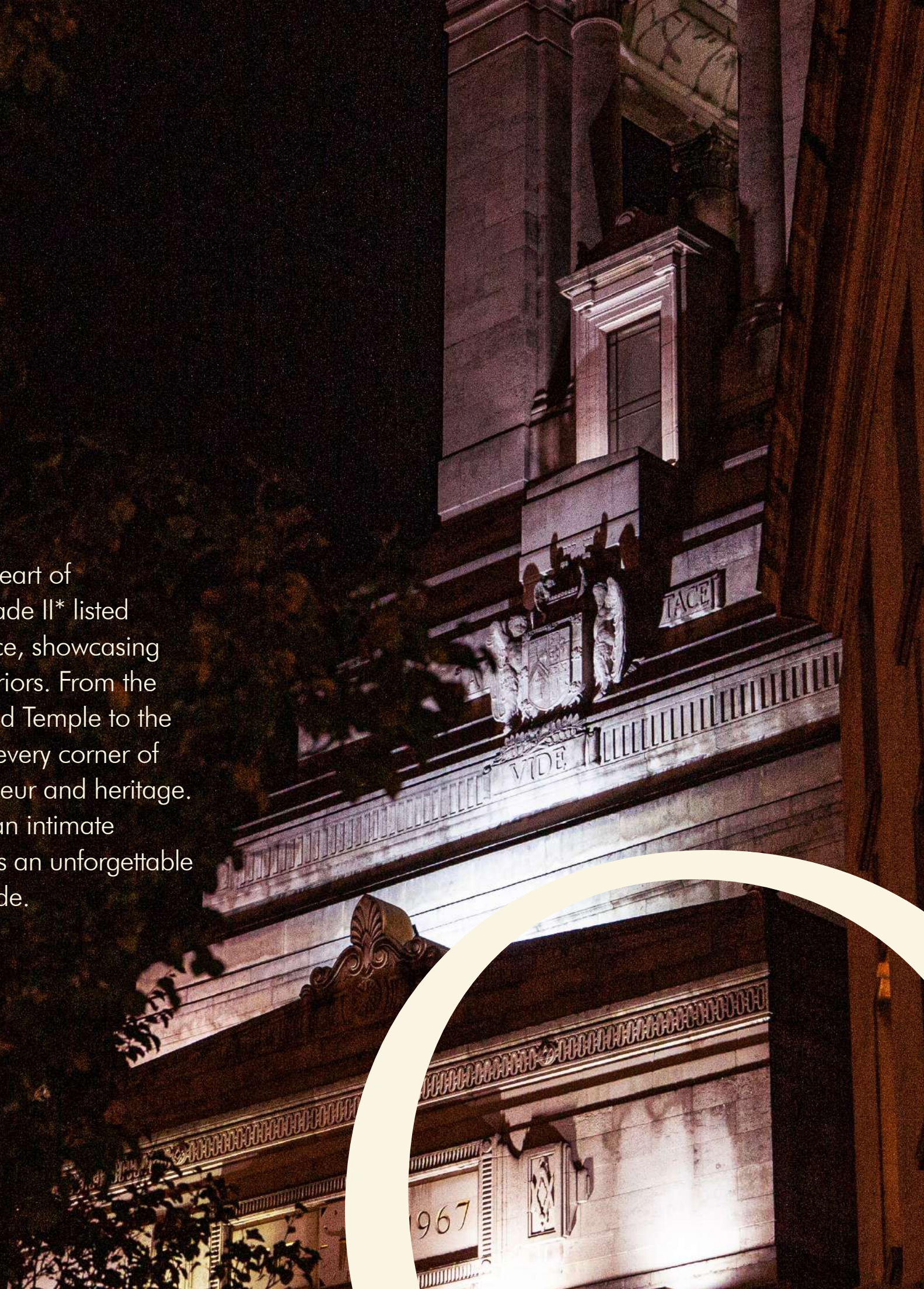
SUSTAINABILITY
29

LOCATION
30

CONTACT
31

WELCOME TO 60 GREAT QUEEN ST.

An exquisite Art Deco icon nestled in the heart of London's vibrant Covent Garden. This Grade II* listed venue is a masterpiece of timeless elegance, showcasing breathtaking architecture and opulent interiors. From the awe-inspiring mosaic ceilings of The Grand Temple to the enchanting intimacy of its unique spaces, every corner of this historic landmark tells a story of grandeur and heritage. Whether you're hosting a grand event or an intimate gathering, 60 Great Queen Street promises an unforgettable experience from the moment you step inside.



ABOUT US

A LANDMARK DESTINATION FOR EXTRAORDINARY EVENTS

Nestled in the heart of Covent Garden, 60 Great Queen Street is the home of commercial events at Freemasons' Hall. Completed in 1933 as the home of the United Grand Lodge of England, this striking Art Deco masterpiece was purpose-built to host meetings and events, a tradition that continues to this day.

With 10 versatile spaces available for hire, accommodating anywhere from 40 to 1,350 guests, the venue offers a distinctive backdrop for an array of events. From conferences, award ceremonies, and gala dinners to fashion shows, creative performances, and weddings, every occasion is elevated by the building's architectural magnificence and timeless elegance.



HISTORY

A LEGACY OF KNOWLEDGE AND PHILANTHROPY

Since 1775, 60 Great Queen Street has been a gathering place for Freemasons, an institution built on knowledge, tradition, and philanthropy. The current building, completed in 1933, is a monument to those who lost their lives in World War I and was initially named the Masonic Peace Memorial. Remarkably, it was funded entirely by Freemason Lodges across the country, a testament to the fraternity's unity and commitment.

Freemasonry traces its origins to the world of stonemasonry, where early members possessed expertise in building and geometry. Over time, it evolved into a society renowned for travel, knowledge sharing, and fraternity. Many distinguished historical figures were Freemasons,

including Sir Christopher Wren, the visionary architect of St. Paul's Cathedral, and Sir Winston Churchill, Britain's wartime Prime Minister.

Freemasonry is an inclusive and diverse organisation with no political or religious affiliations and welcomes members of all ages, races, religions, and backgrounds. Its core values — Integrity, Friendship, Respect, and Service—are complemented by a deep commitment to charity. In 2024, the United Grand Lodge of England raised an impressive £15 million for charitable causes, and today, every emergency helicopter in London is funded by Freemasons, reflecting their enduring legacy of generosity and service.



WHY 60 GREAT QUEEN STREET?



PRIME CENTRAL LONDON LOCATION

Ideally situated in Covent Garden, our venue offers unparalleled accessibility and prestige in the heart of the city.



LICENSE UNTIL 2AM

Continue your event late into the night with a late license until 2am.



FLEXIBLE SPACES WITH SCALABLE CAPACITIES

Our versatile rooms accommodate events of all sizes, from intimate gatherings to grand celebrations, offering seamless adaptability for any occasion.



RICH HISTORIC SIGNIFICANCE

A striking Art Deco landmark, our venue exudes timeless elegance and a storied heritage that elevates any occasion.



OUTSTANDING ACOUSTICS

Enjoy nightclub level sound for live music and entertainment, with a range of up to 107db.



EXQUISITE CATERING

Indulge in exquisite catering curated by Moving Venue, London's most experienced and renowned event caterer.

PERFECT FOR...



AWARDS CEREMONIES

Celebrate excellence in an iconic and unforgettable setting.



CELEBRATIONS

Celebrate life's unforgettable moments in a venue as extraordinary and meaningful as the occasion.



CONFERENCES

Ignite inspiration and creativity in a setting of grandeur and prestige.



DINNERS & RECEPTIONS

From fine dining to lively drinks receptions within timeless settings.



FASHION SHOWS

A runway set amidst elegance and charm.



FILMING

Capture a scene within architectural grandeur.



PRODUCT LAUNCHES

Bring your brand to life in a venue designed to captivate.



SEASONAL PARTIES

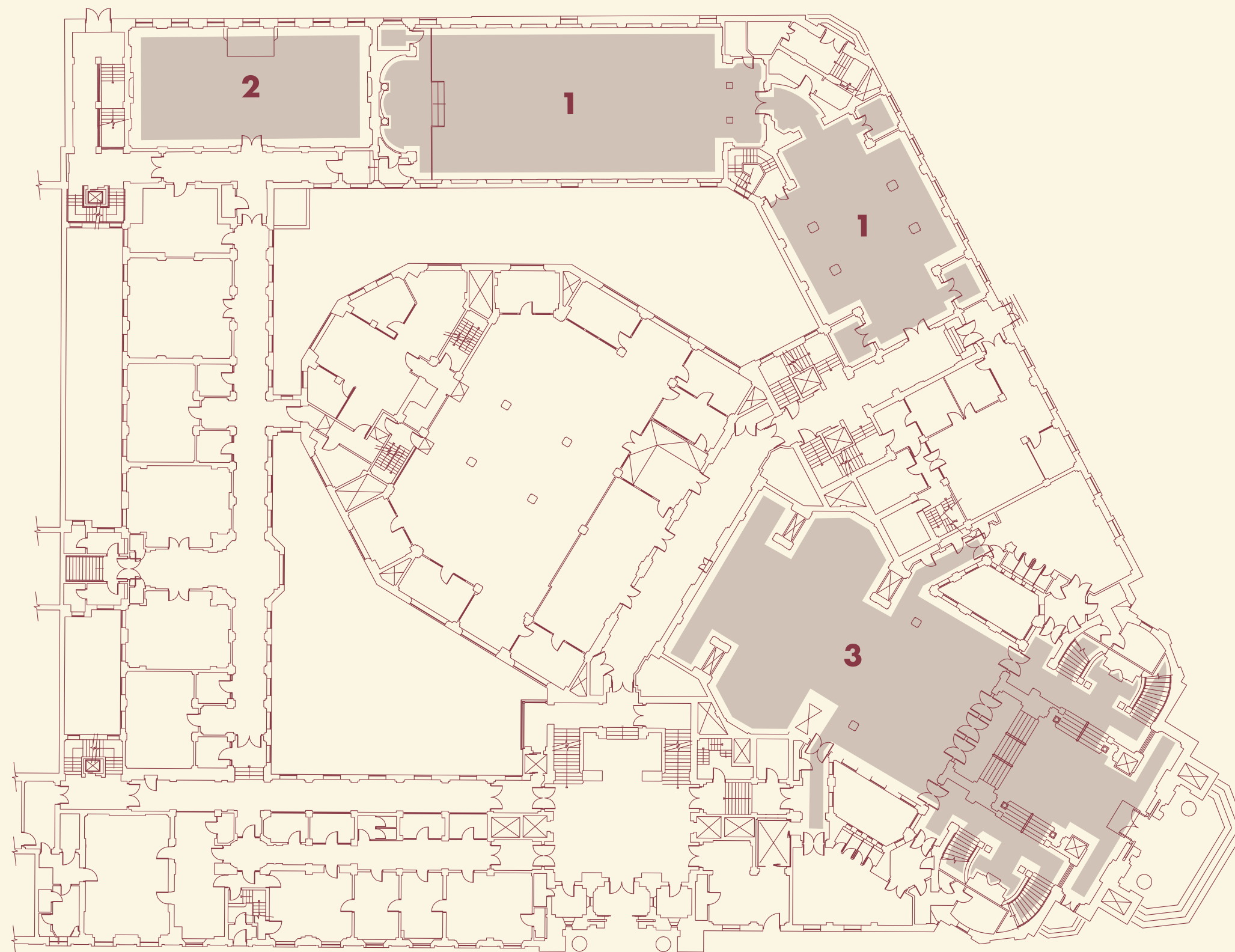
Celebrate the season within elegant settings.

THE GROUND FLOOR

TIMELESS ART DECO
ELEGANCE AWAITS AT
60 GREAT QUEEN STREET

The ground floor boasts a selection of breathtaking spaces available for hire, each steeped in Art Deco elegance and historic charm. Discover a world of timeless grandeur and make your occasion truly extraordinary.

- 1 THE GALLERY & ANTEROOM
- 2 THE OLD BOARDROOM
- 3 THE TOWER DOORS & FOYER

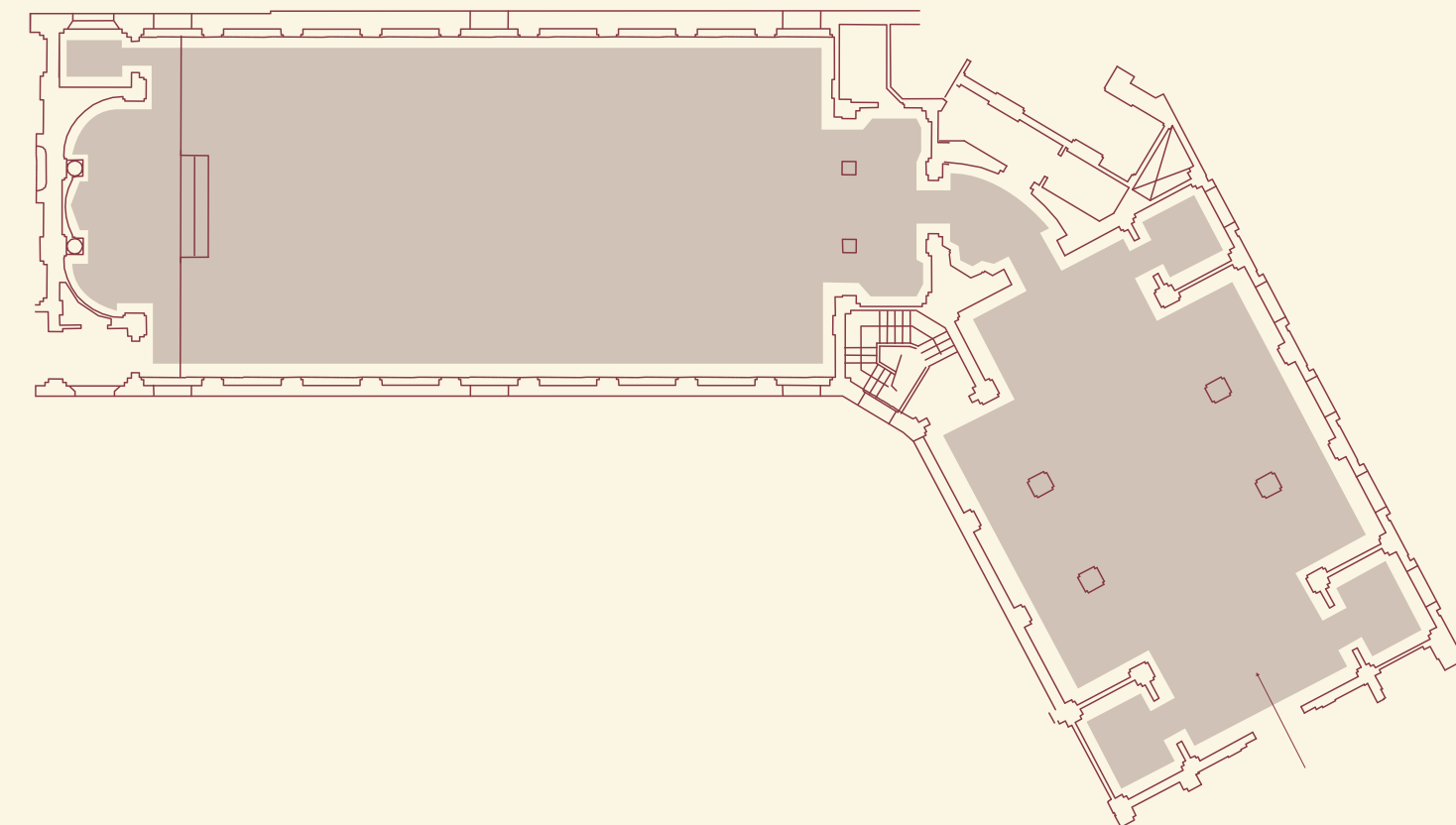
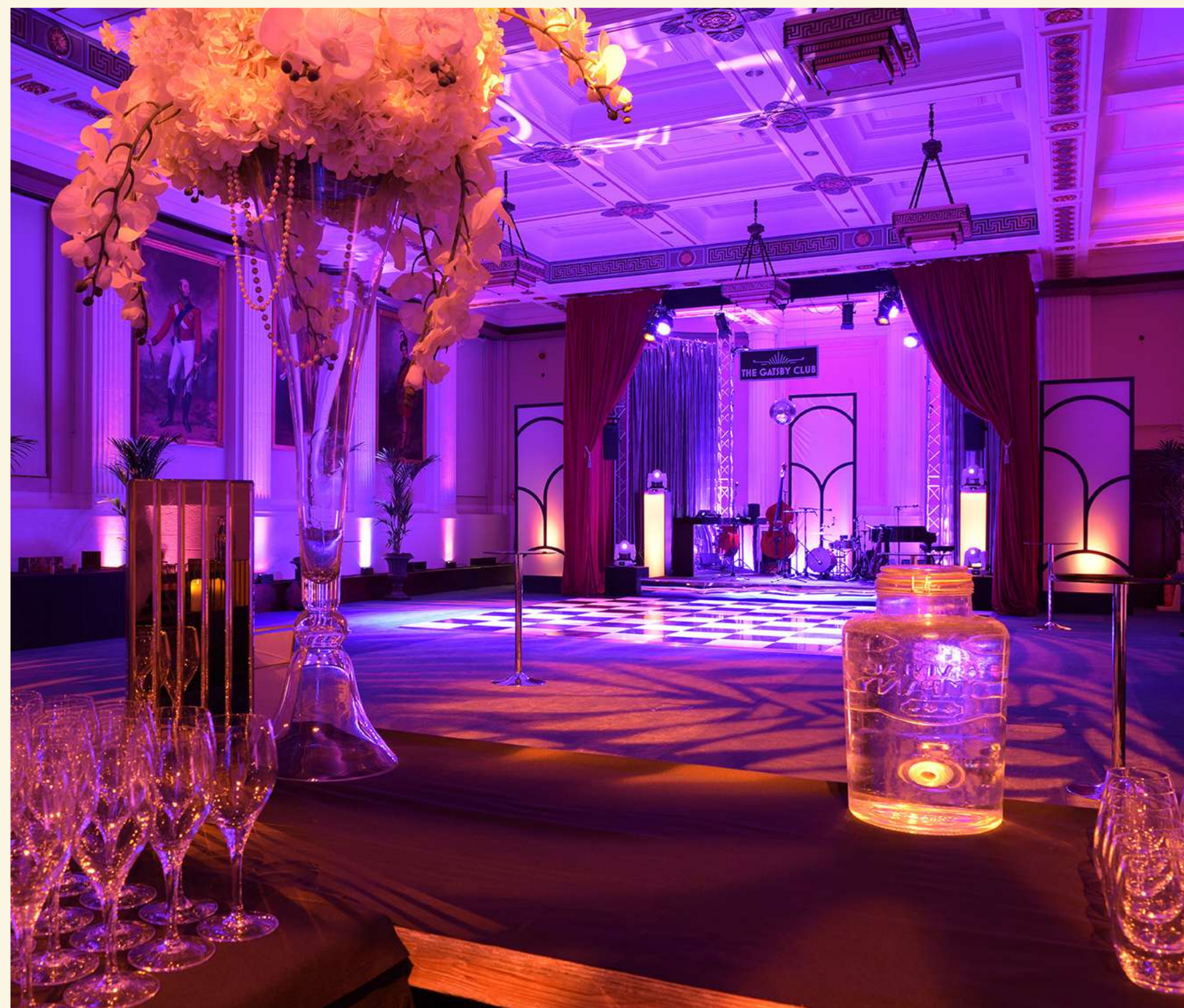


' THE GALLERY & ANTEROOM

GALLERY
270 M²

ANTEROOM
185 M²

CAPACITIES
THEATRE **220**
CABARET **160**
SEATED **220**
RECEPTION **350**



ELEGANT SPACES, FLAWLESS EVENTS

The Gallery, with its soaring ceilings, abundant natural light, and exquisite architectural details, provides a captivating setting for any occasion. Complemented by the adjoining Anteroom, an ideal space for refreshments and drinks receptions, these ground-floor spaces offer a seamless blend of heritage charm and modern functionality.

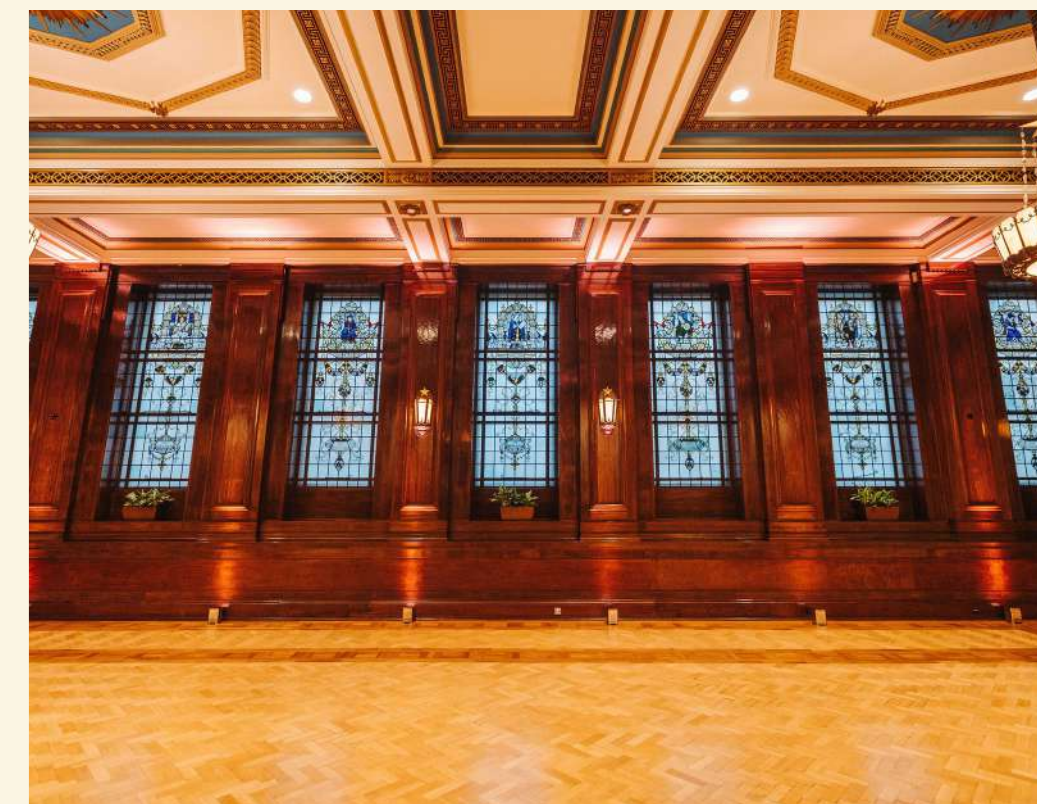
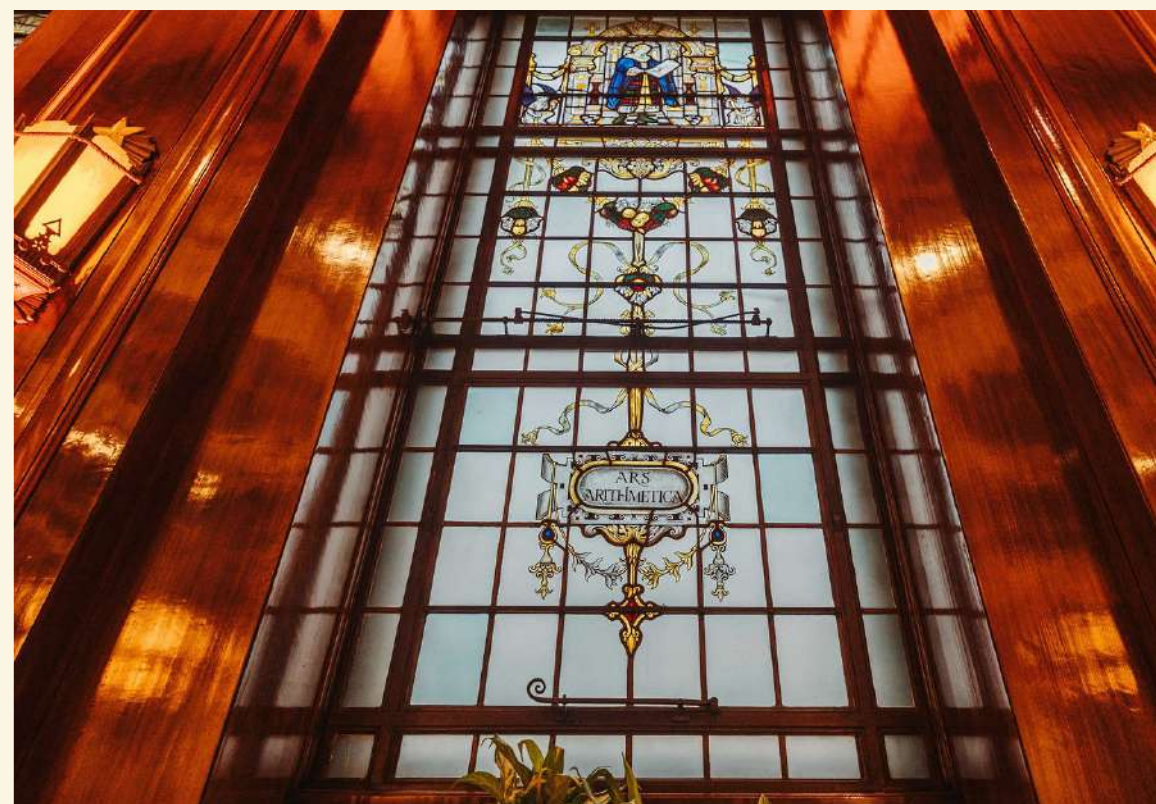
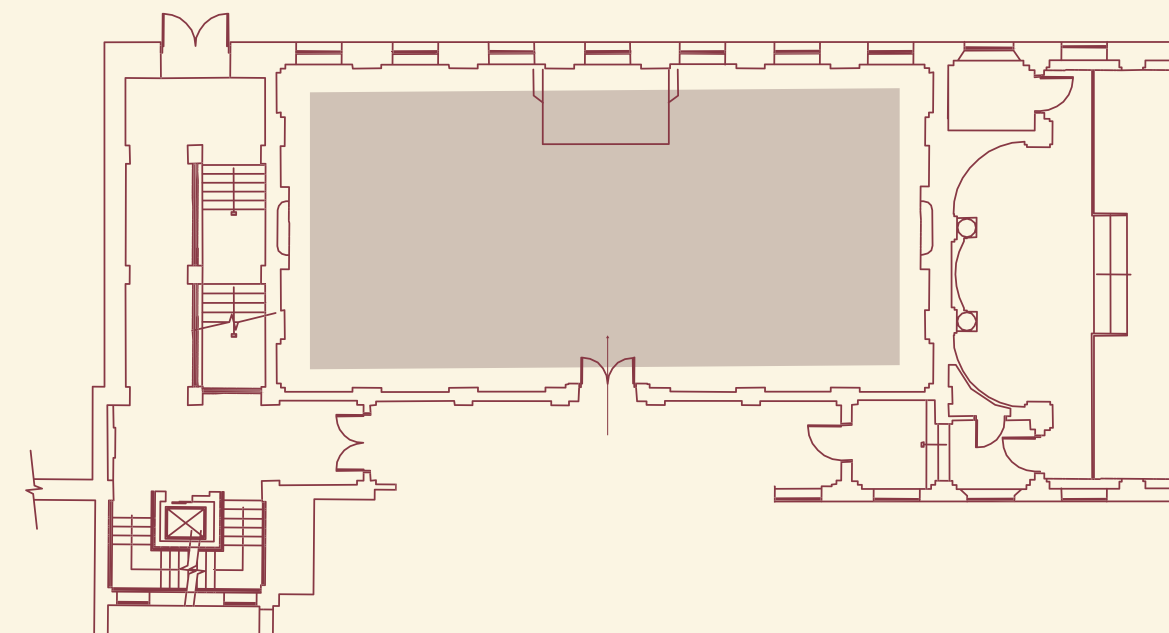
2 THE OLD BOARDROOM

TIMELESS CHARM MEETS
VERSATILE FUNCTIONALITY
FOR MEMORABLE
MEETINGS AND EVENTS

Adjacent to The Gallery, The Old Boardroom offers a versatile and distinguished setting for breakout sessions, workshops, or catering needs.

USABLE FLOOR SPACE
168 M²

CAPACITIES
THEATRE **60**
CABARET **60**
SEATED **60**
RECEPTION **60**



3 THE TOWER DOORS & FOYER

AN ICONIC
ENTRANCE LEADING
TO EXTRAORDINARY
EVENT SPACES

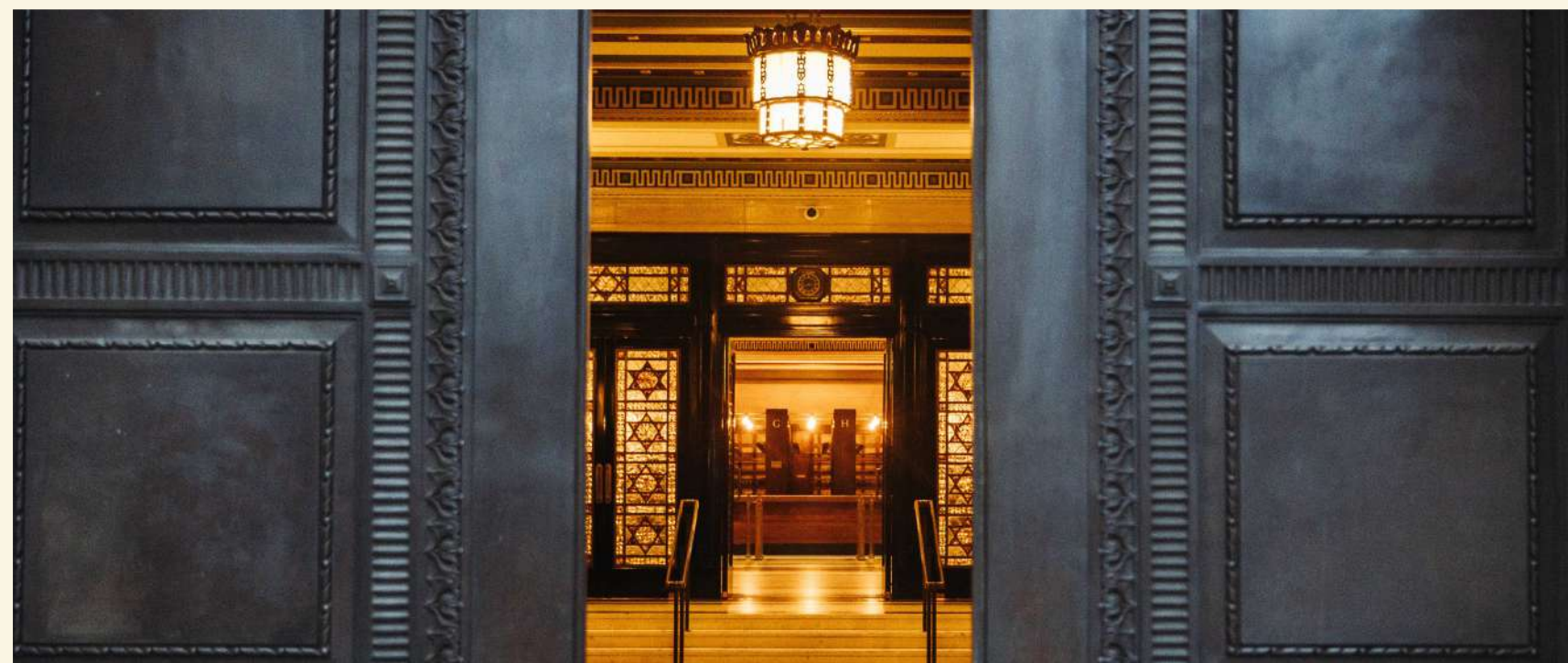
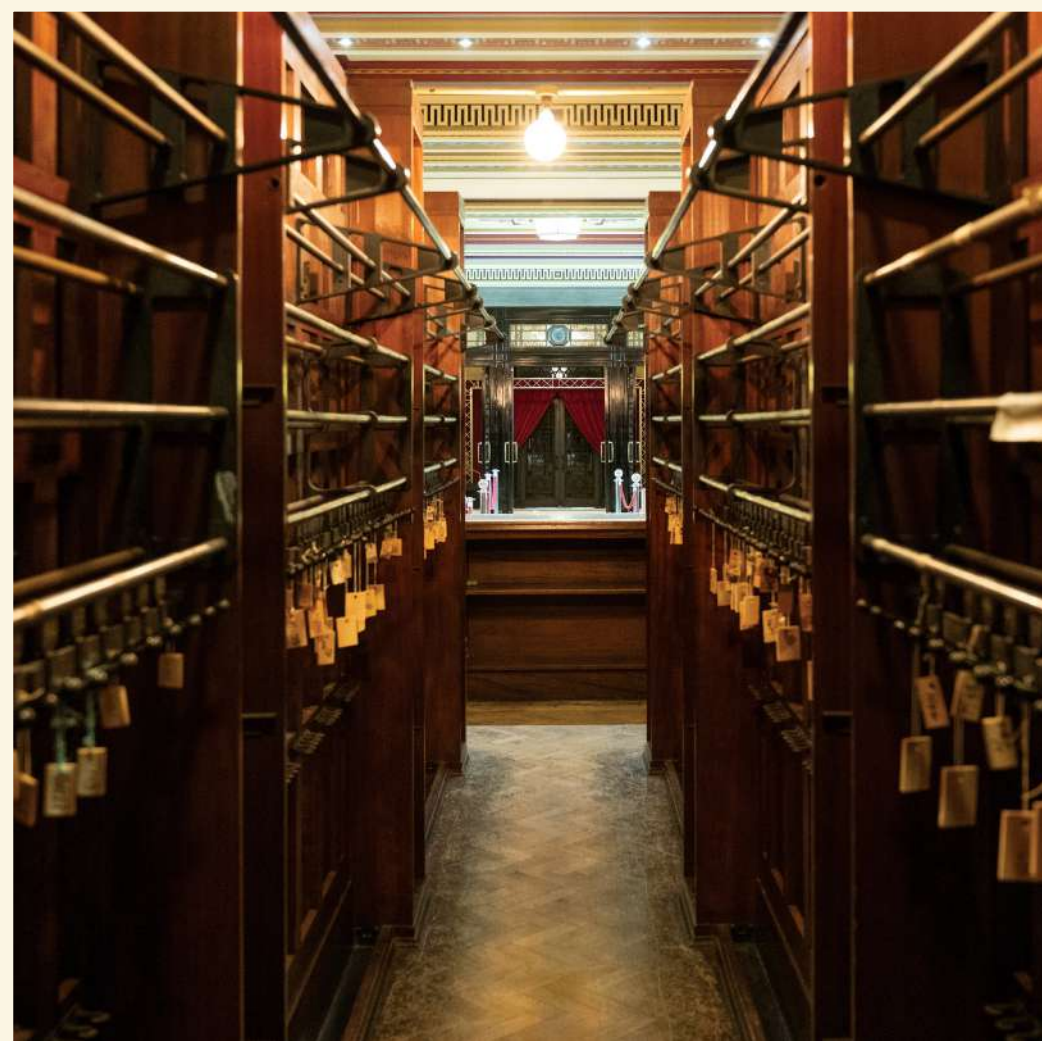
USABLE FLOOR SPACE
120 M²

CAPACITIES
THEATRE **100**
CABARET **80**
SEATED **80**
STANDING **200**



The iconic bronze doors, a striking centrepiece in the heart of Covent Garden, are only open exclusively to invited guests. Beyond these majestic doors lies a marble entrance hall, leading to the original cloakroom.

The Tower Doors and Foyer are exclusively available for events held in The Grand Temple and The Vestibules.

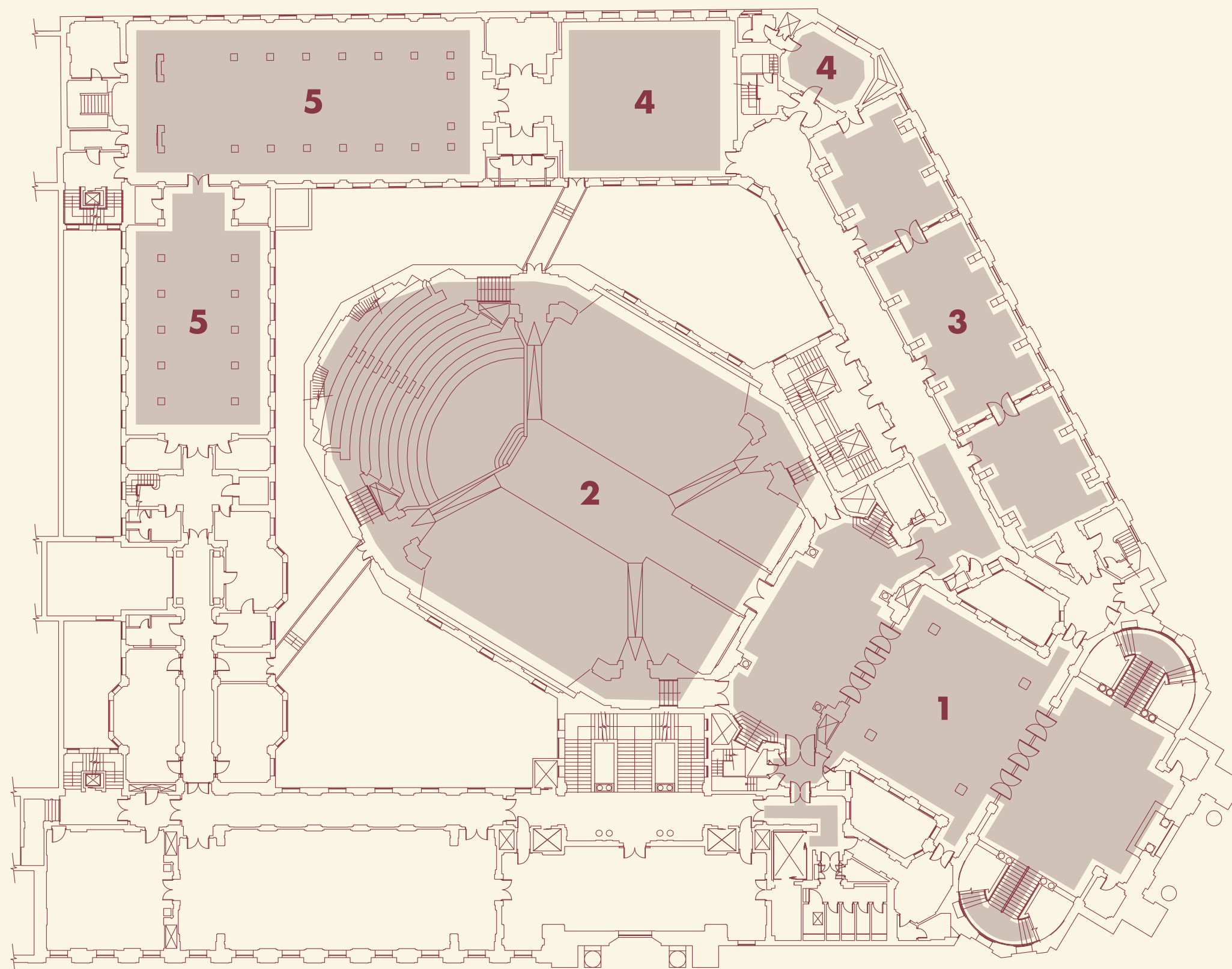


THE FIRST FLOOR

UNVEILING TIMELESS GRANDEUR — 60 GREAT QUEEN STREET'S FIRST FLOOR SPACES

The first floor of 60 Great Queen Street showcases extraordinary spaces brimming with Art Deco elegance. From the iconic Grand Temple to the versatile Long Room, the welcoming Vestibules, and the serene South Gallery, each area combines historic charm with modern sophistication, offering an exceptional setting for unforgettable events.

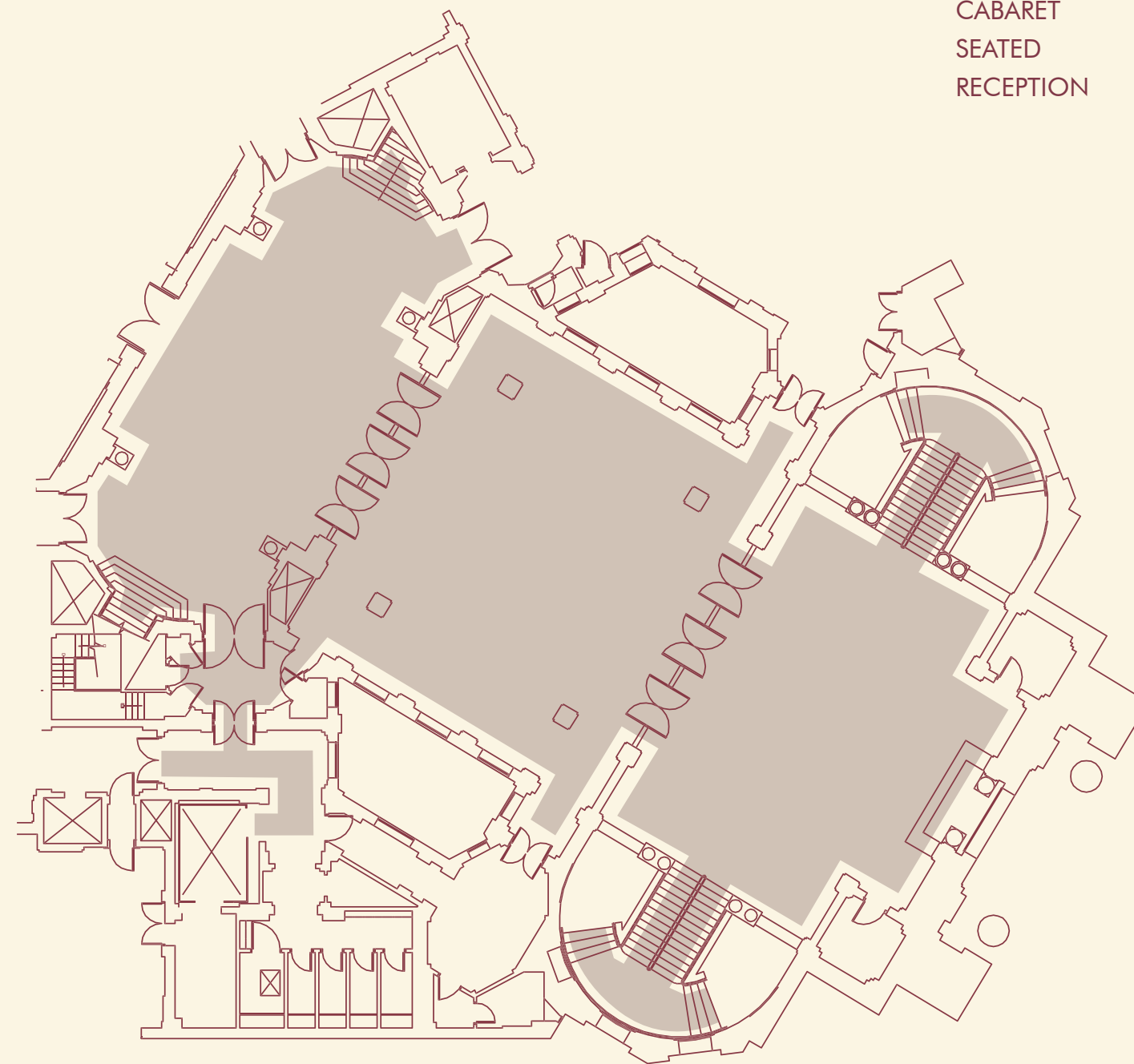
- 1 THE VESTIBULES
- 2 THE GRAND TEMPLE
- 3 THE LONG ROOM
- 4 THE GRAND OFFICERS' SUITE
- 5 THE SOUTH GALLERY



' THE VESTIBULES

USABLE FLOOR SPACE
430 M²

CAPACITIES
THEATRE **150**
CABARET **96**
SEATED **300**
RECEPTION **500**



WHERE SOPHISTICATION
MEETS VERSATILITY FOR
EVERY GRAND OCCASION

Connected to The Grand Temple, The Vestibules embody sophistication and charm. Available for exclusive hire, this remarkable space effortlessly transforms into three distinct areas using ornate dividing doors. Accessible solely through The Tower Doors and a sweeping marble staircase, The Vestibules offer a versatile and opulent setting, ideal for glamorous parties, refined dinners, conferences, receptions, filming, and fashion shows.



2 THE GRAND TEMPLE

WHERE TIMELESS ELEGANCE MEETS ENDLESS POSSIBILITIES

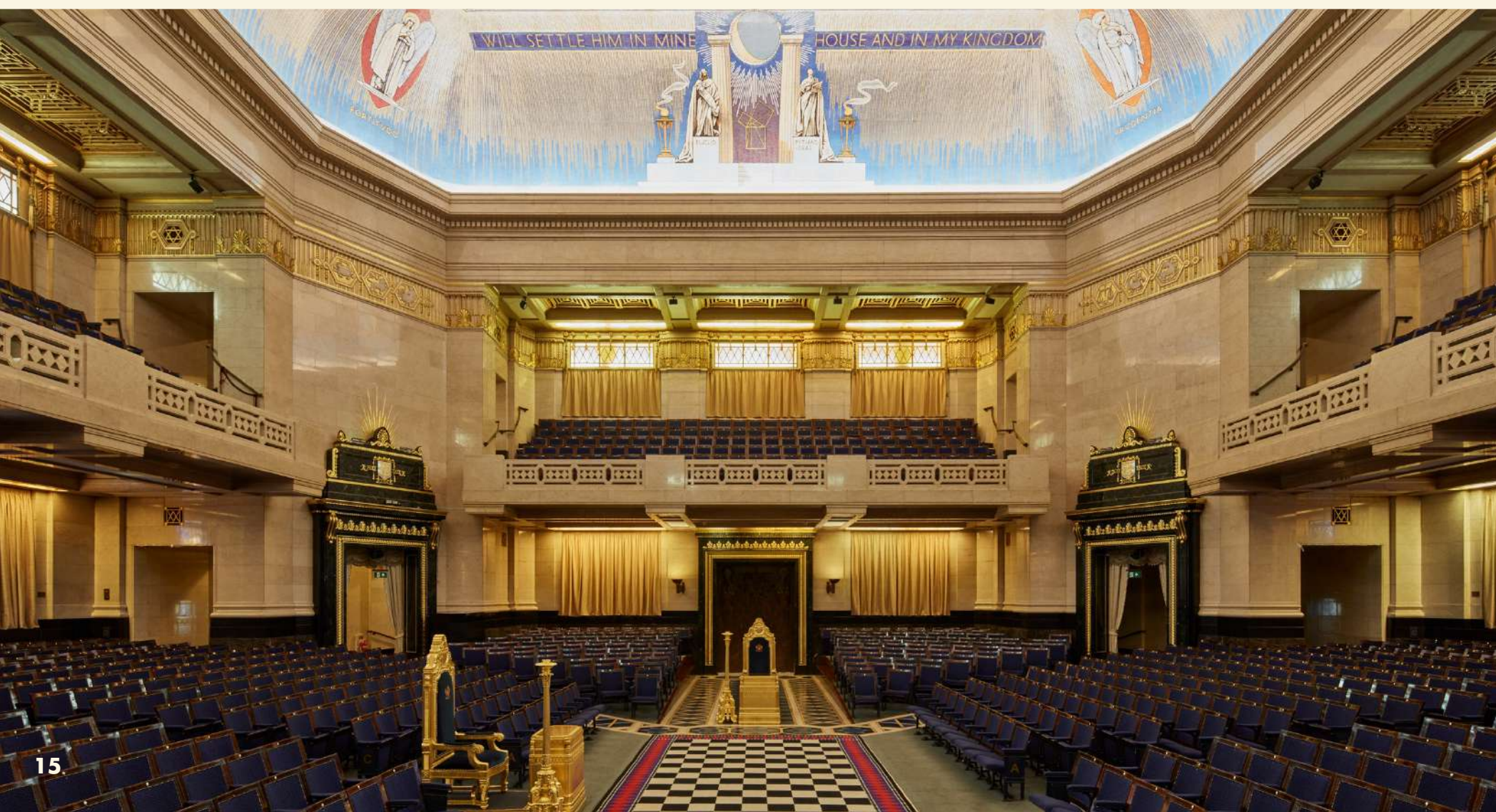
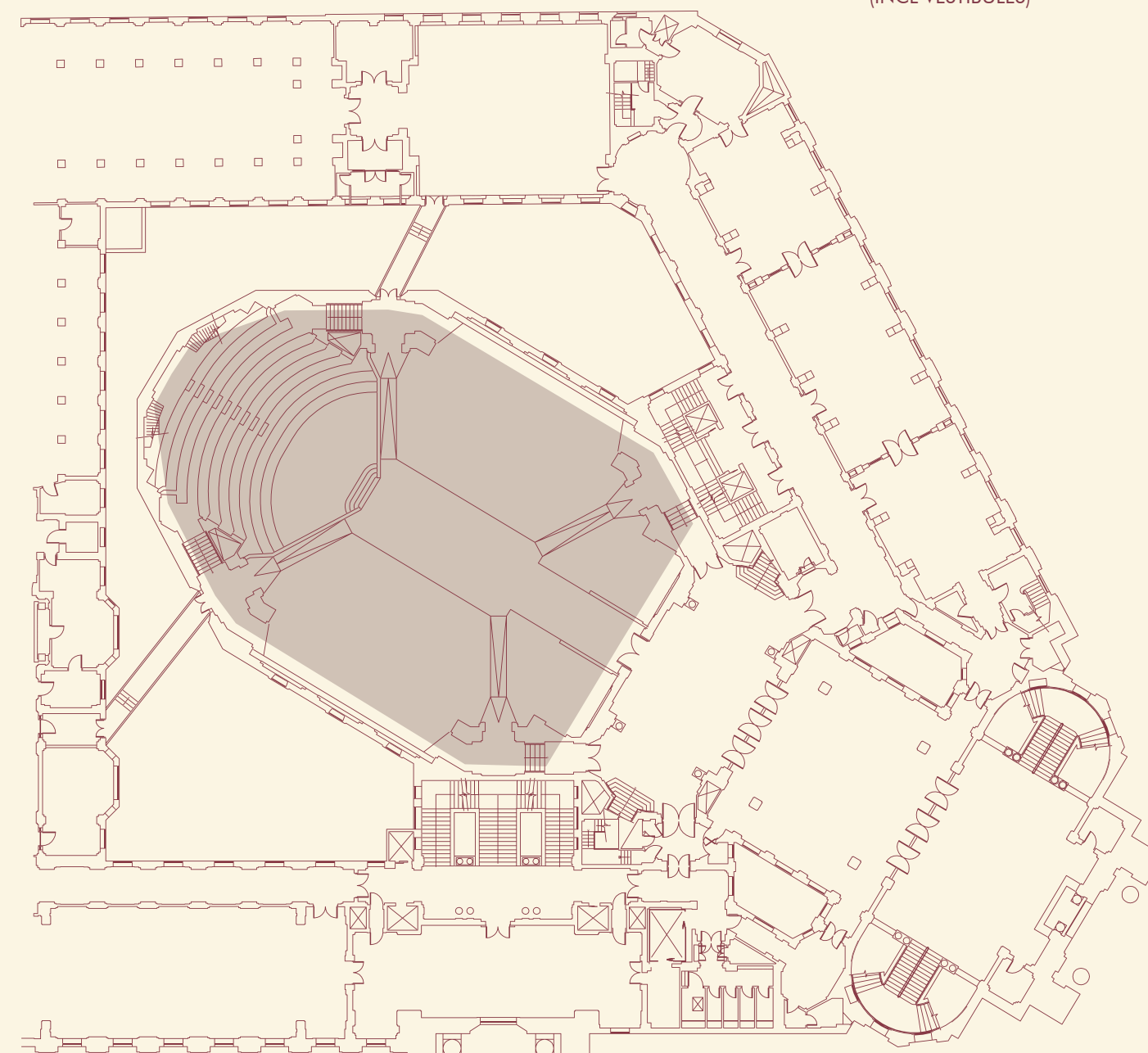
Immerse yourself in the awe-inspiring grandeur of The Grand Temple featuring a meticulously handcrafted mosaic ceiling and a timeless sense of elegance. The space includes access to adjoining rooms, offering a flexible and dynamic space, perfect for conferences, exhibitions, awards ceremonies, graduations and beyond.

USABLE FLOOR SPACE
548 M²

STAGED
USABLE FLOOR SPACE
417 M²

CAPACITIES
FIXED THEATRE **1,350**

STAGED CAPACITIES
THEATRE **580**
CABARET **280**
SEATED **450**
RECEPTION **600**
STANDING (INCL VESTIBULES) **1,100**





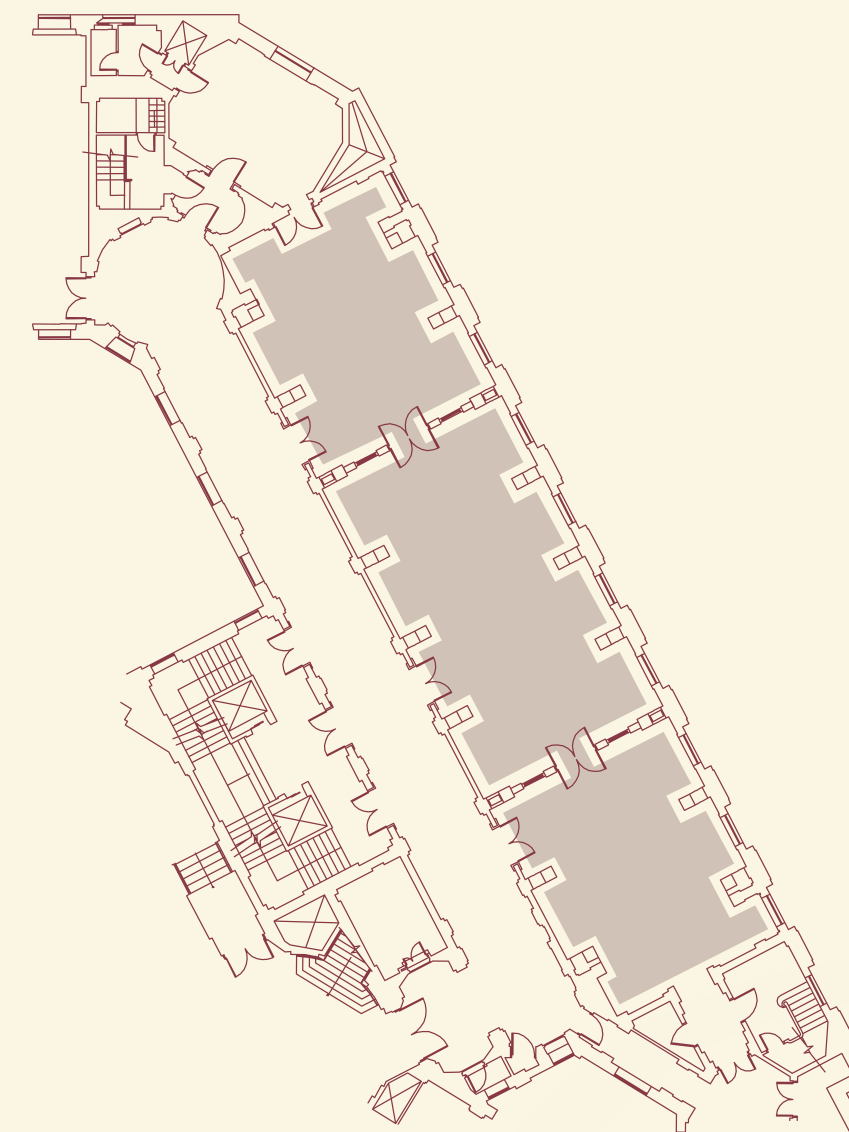
3 THE LONG ROOM

AN EXPANSIVE,
ORNATE SETTING FOR
UNFORGETTABLE MOMENTS
— THE LONG ROOM

Adjoining The Grand Temple, The Long Room, offers an expansive and versatile setting that seamlessly blends elegance with functionality. This ornate space is perfect for breakout sessions, workshop zones, or even a chic speakeasy, making it an exceptional choice for creating memorable experiences. With its unique character and proximity to The Grand Temple, The Long Room adds a touch of historic charm to any event.

USABLE FLOOR SPACE
160 M²

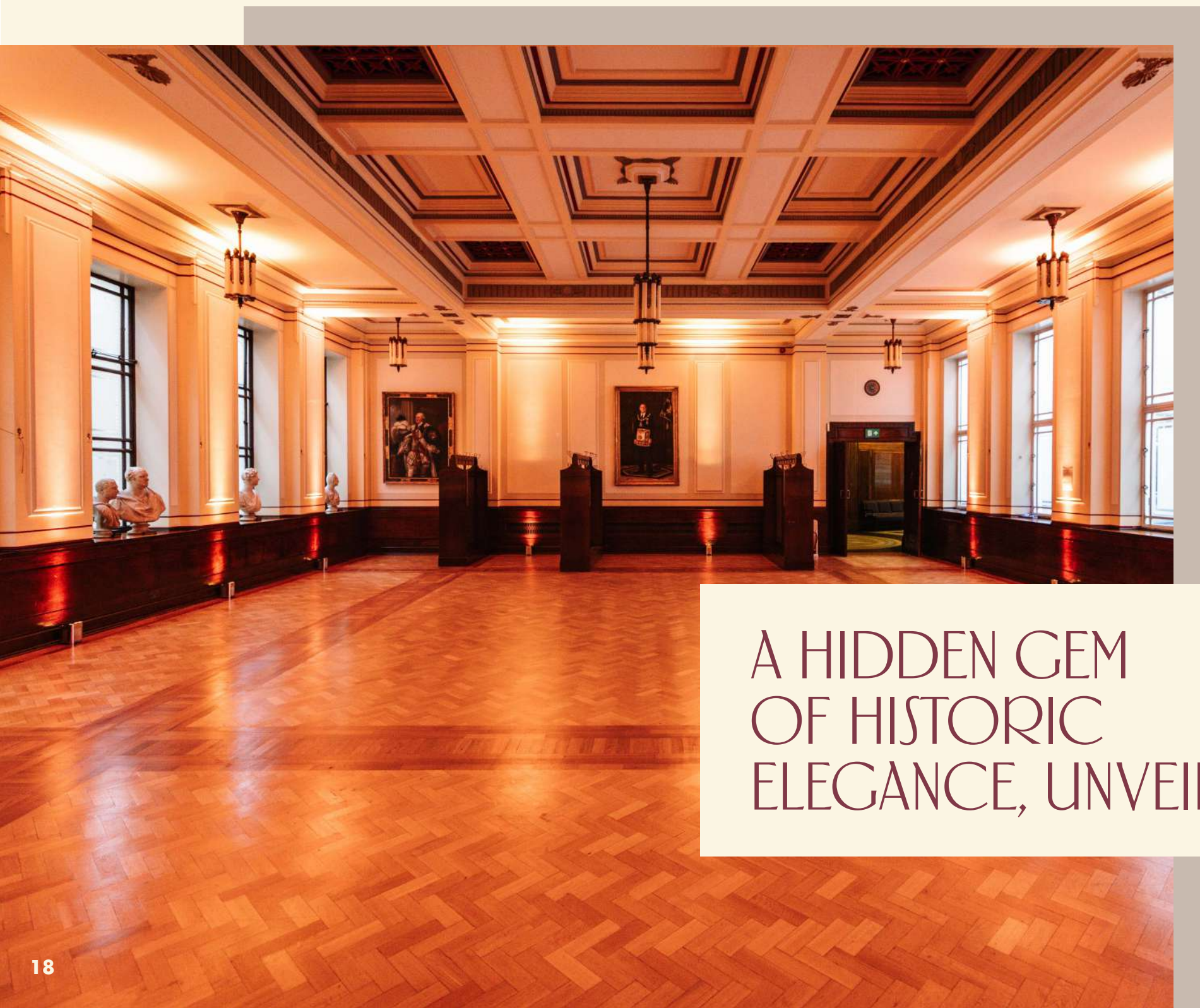
CAPACITIES	
THEATRE	60
CABARET	40
RECEPTION	120
SEATED	50



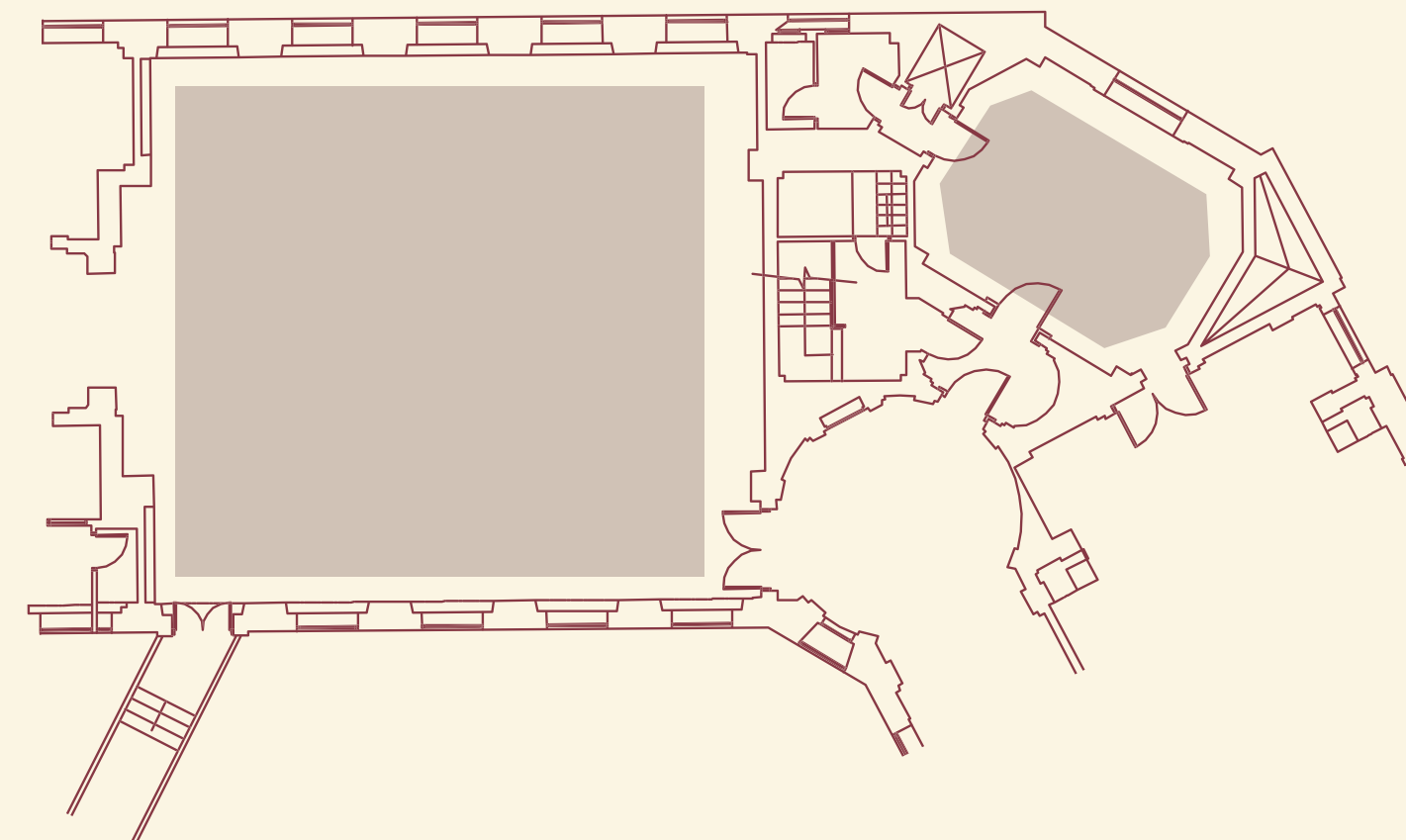
⁴ THE GRAND OFFICERS' SUITE

USABLE FLOOR SPACE
150 M²

CAPACITIES
THEATRE **100**
CABARET **70**
STANDING **150**
SEATED **80**



A HIDDEN GEM
OF HISTORIC
ELEGANCE, UNVEILED



Offering an intimate yet impressive setting for high-profile events. Steeped in history and adorned with exquisite Art Deco detailing, this distinguished space exudes prestige and sophistication. Ideal for VIP receptions, private dining, weddings or executive meetings, the suite provides a luxurious backdrop that blends heritage with exclusivity. Whether hosting an intimate soirée or a distinguished gathering, the Grand Officers' Suite promises an ambiance of refinement that leaves a lasting impression.

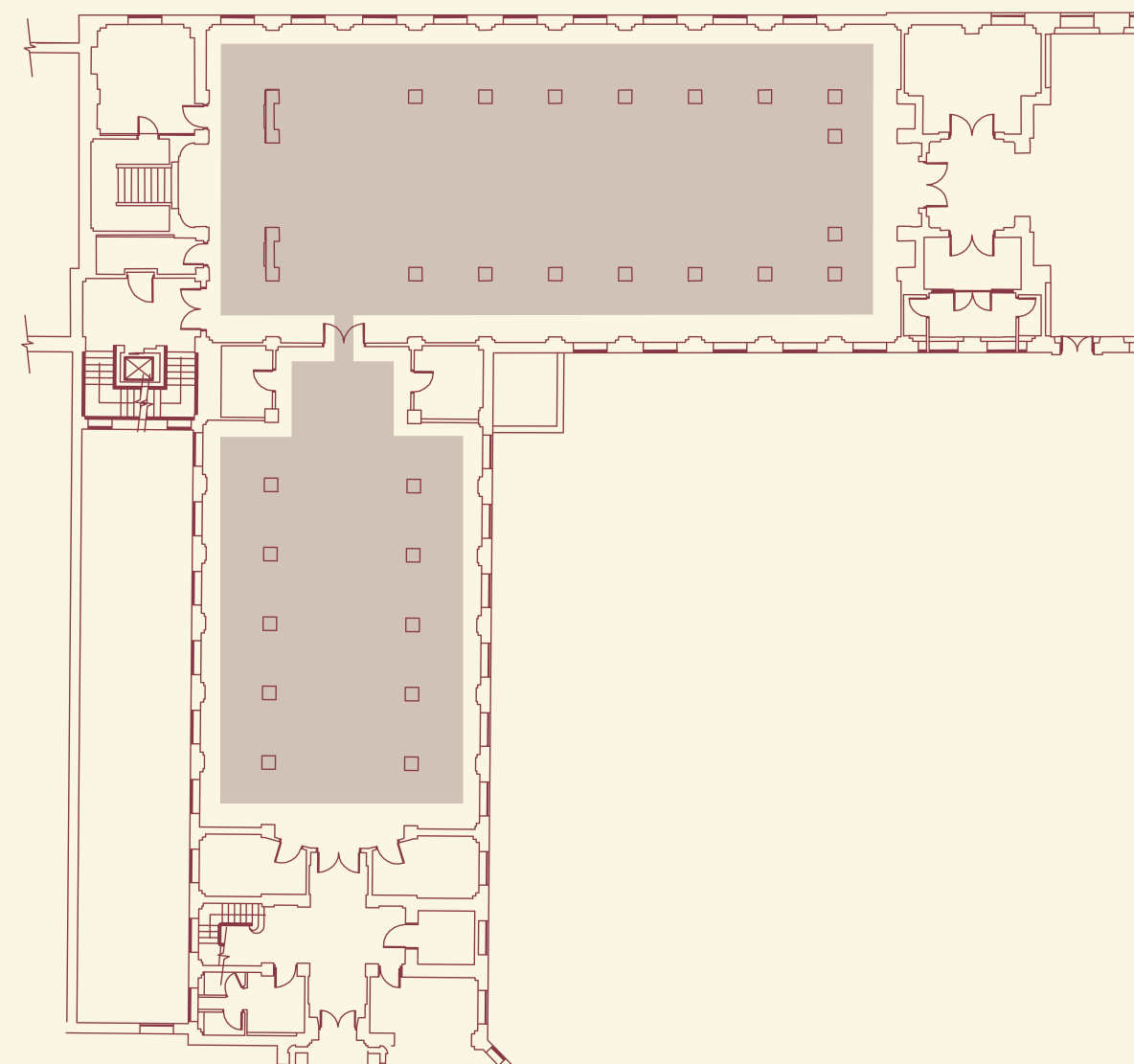
5 THE SOUTH GALLERY



WHERE HISTORIC
CHARM AND ARCHITECTURAL
GRACE CONVERGE —
THE SOUTH GALLERY

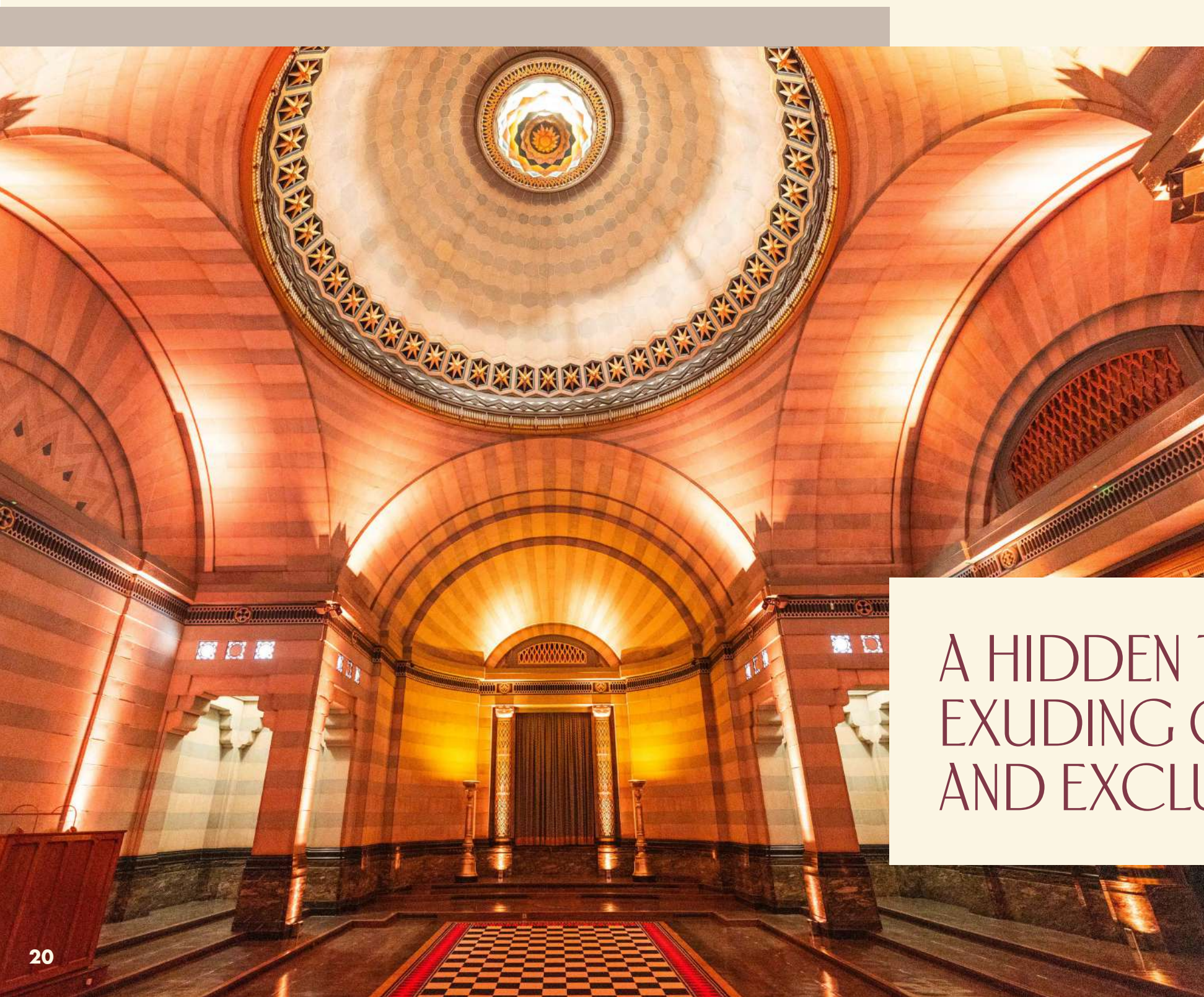
USABLE FLOOR SPACE
210 M²

CAPACITIES
THEATRE **100**
CABARET **70**
RECEPTION **150**
SEATED **80**



The South Gallery beautifully preserves the historic charm of its museum heritage. Encircled by a graceful mezzanine and adorned with original, striking architectural details, it radiates both character and sophistication.

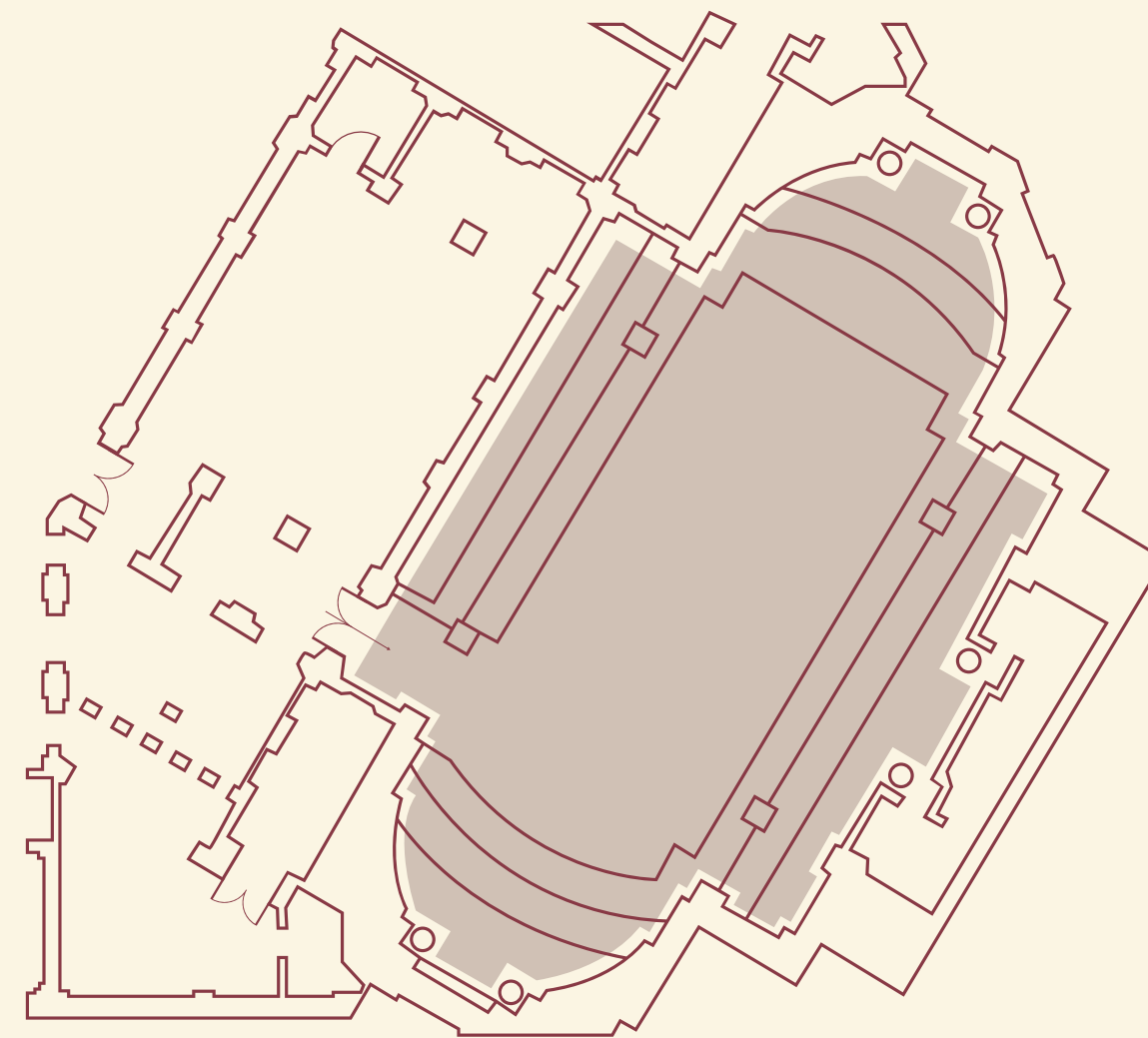
EGYPTIAN ROOM



A HIDDEN TREASURE
EXUDING OPULENCE
AND EXCLUSIVITY

USABLE FLOOR SPACE
270 M²

CAPACITIES
THEATRE **150**
SEATED **50**
CEREMONY **150**



This remarkable space is a well-kept secret nestled in the heart of 60 Great Queen Street. With its exclusive availability on select dates across the year, it stands out as a rare and coveted gem, perfect for those seeking a truly unique and distinguished events space.

Guests are welcomed through an ornate anteroom into the magnificent Egyptian Room, a space adorned with opulent gold accents, stunning grand pillars that exude timeless luxury. Ideal for intimate dinners, drinks receptions and wedding ceremonies, this unique setting provides a sense of charm and elegance for your event.

VENUE HIRE

INCLUSIONS & COSTINGS

GROUND FLOOR

THE GALLERY & ANTEROOM

Inclusions:

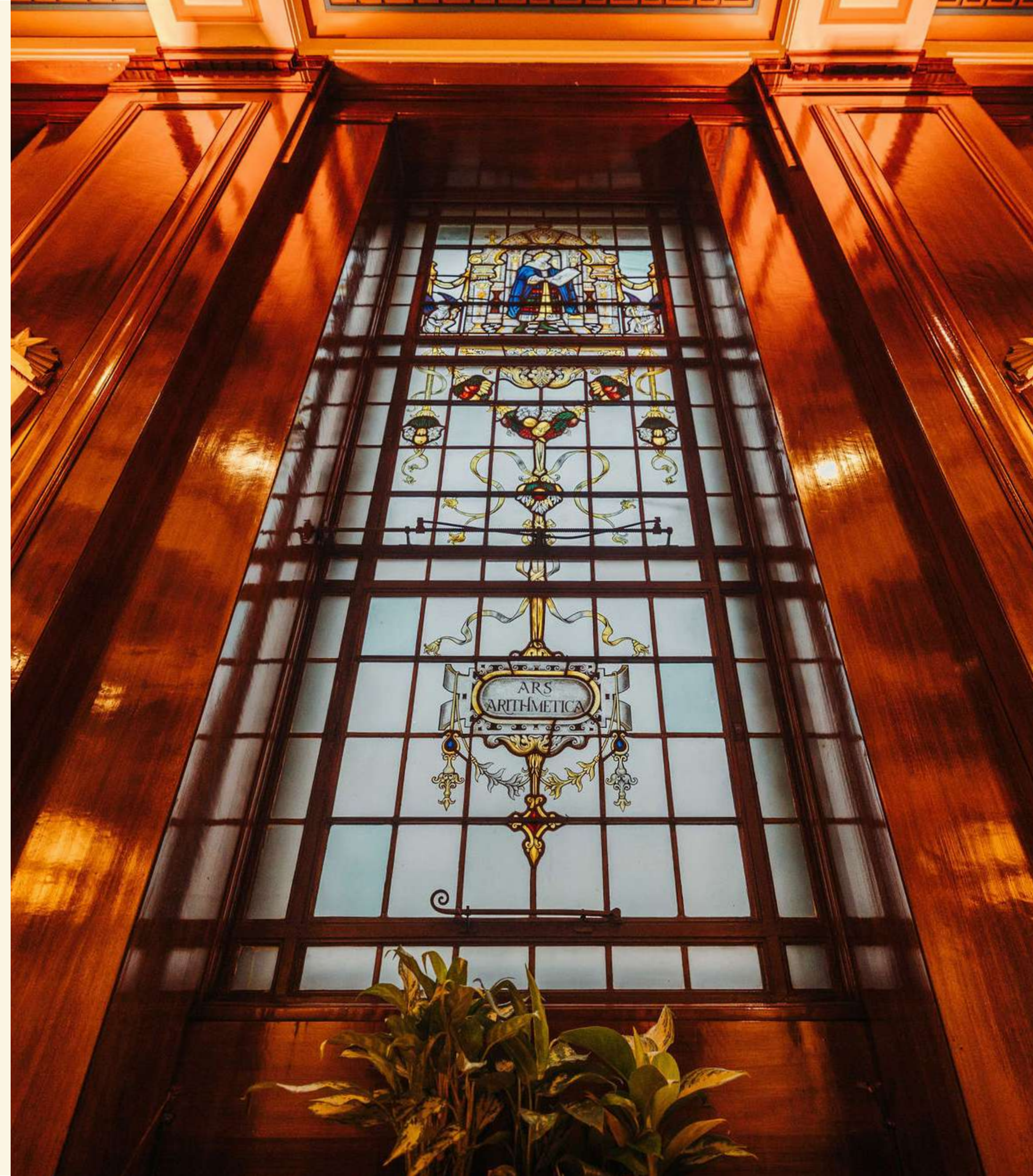
- Grand entrance via 60 Great Queen Street
- Extended access from 7am to 11pm
- Late license available until 2 am available at an additional hourly cost
- Digital signage on arrival
- A turnkey conference package*
- Flexible arrangements to support rig and de-rig
- Dedicated Venue Manager
- Expert Catering Planner
- Access to our exclusive partners

* Additional cost to venue hire

VENUE HIRE PRICE: £5,000 + VAT

OLD BOARDROOM

Price on request





VENUE HIRE

INCLUSIONS & COSTINGS

FIRST FLOOR

THE GRAND TEMPLE & ADJOINING ROOMS (VESTIBULES, LONG ROOM, THE GRAND OFFICERS' SUITE, THE TOWER DOORS & FOYER)

Inclusions:

- Grand entrance through the iconic bronze Tower Doors
- Access to the venue from 7am to 11pm
- Late license available until 2am available at an additional cost
- Large heritage cloakroom
- A built-in stage, ideal for presentations, key-note speakers and performances (within the Grand Temple only)
- Fixed conference seating (within the Grand Temple)
- Security and cleaning services during the live event
- Dedicated Venue Manager
- Access to our exclusive partners

VENUE HIRE PRICE: £20,000 + VAT

THE VESTIBULES & ADJOINING ROOMS (LONG ROOM, THE TOWER DOORS & FOYER)

Inclusions:

- Grand entrance through the iconic bronze Tower Doors
- Extended access from 7am to 11pm
- Late license available until 2am available at an additional cost
- Large heritage cloakroom
- Security and cleaning services during the live event
- Flexible arrangements to support rig and de-rig
- Dedicated Venue Manager
- Expert Catering Planner
- Access to our exclusive partners

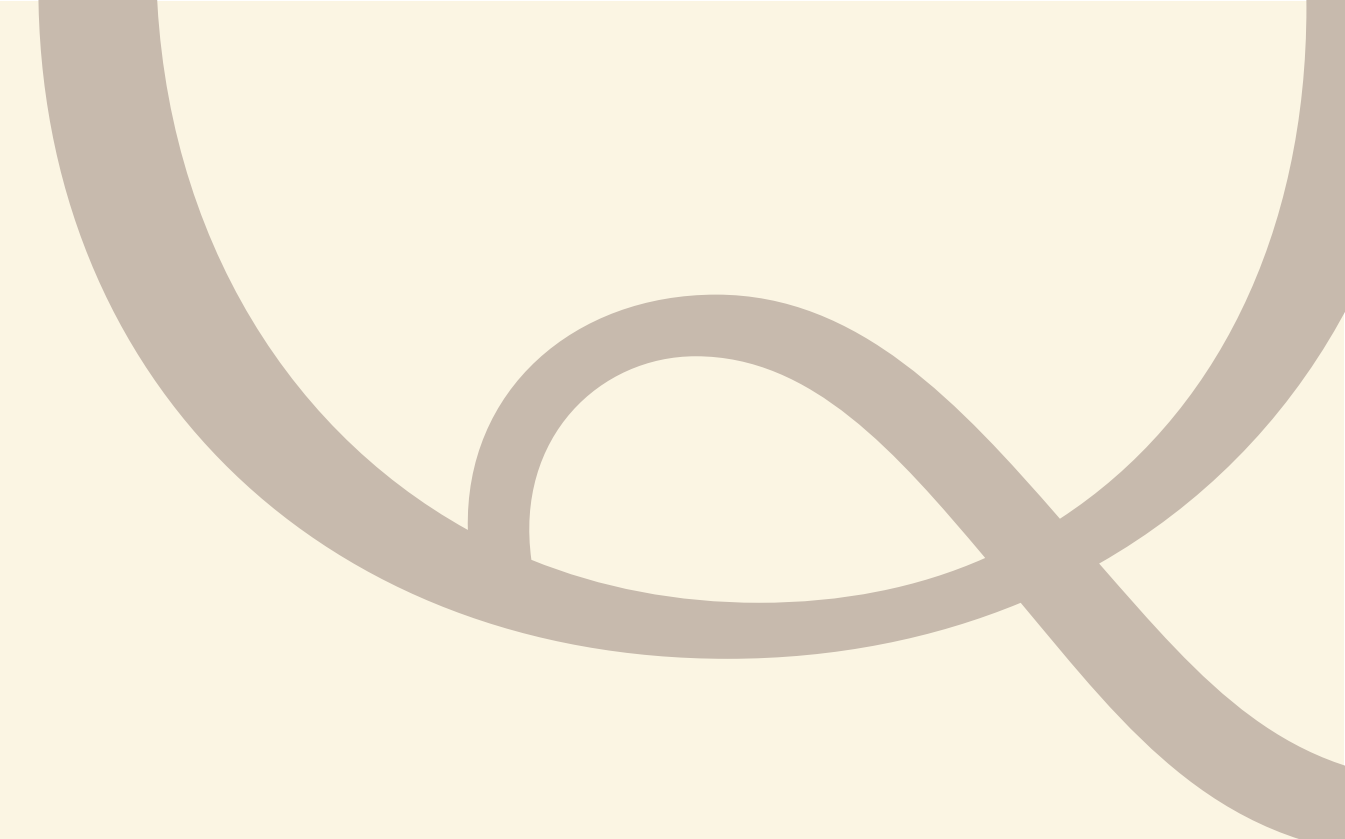
VENUE HIRE PRICE: £10,500 + VAT

THE SOUTH GALLERY

Price on request

THE EGYPTIAN ROOM

Price on request



OUR SUPPLIERS

We are delighted to work alongside a handpicked selection of exceptional suppliers at 60 Great Queen Street. From stunning florists and outstanding catering to first-class entertainment, stylish furniture, and expert production teams, every detail is thoughtfully curated to bring each event to life with elegance and precision. Their passion and creativity ensure that every occasion at 60 Great Queen Street is truly unforgettable.





CATERING

51°29'04.7"N 0°02'15.8"W

MOVING VENUE

VENUE CATERERS

Moving Venue is 60 Great Queen Street's in-house catering partner and owned by Smart Group. Moving Venue's reputation for delicious food and outstanding excellence has secured this sensational catering company a place on the accredited supplier list of over 40 venues, in and around London.

Driven by creating memorable, delicious catering experiences, our in-house caterers design menus tailored to the style, budget and needs of your event and its guests. From intimate cocktail receptions to immersive conferences, from elegant gala dinners to stunning award ceremonies, their passionate, creative team of chefs devise dishes that your guests will simply love.



All of Moving Venue's menus are carefully considered from field to fork, always with seasonal ingredients, producing bespoke, vibrant and expertly crafted catering at their extraordinary events. They are experienced in ensuring their menus are deliverable for all events whilst ensuring innovation and creativity, using seasonal and sustainable ingredients, is always at the forefront of their creations.

movingvenue.com
greatfood@movingvenue.com
movingvenue



PRODUCTION



Deliver creative event production, from product launches to exhibitions, with seamless execution.

eventconcept.com
info@eventconcept.com
eventconcept



Offer high-end production solutions, specialising in lighting, AV, set design, and technical installations.

oxygen-events.com
info@oxygen-events.com
oxygen_events



Provide seamless technical production for conferences and live broadcasts with expert AV solutions.

presentcommunications.com
kieron@presentcommunications.com
presentcomms



Specialise in lighting, sound, and video production, creating impactful experiences for events and brand launches.

prlive.co
hello@prlive.co
pr_live_



Specialise in creating tailored, elegant events that reflect their clients' visions, with a focus on seamless planning and exceptional experiences.

uptownevents.co.uk
create@uptownevents.co.uk
uptowneventsuk



Provide comprehensive event production services, including lighting, sound, and live entertainment, ensuring flawless execution.

velvetentertainment.net
info@velvetliving.co.uk
velvetentertainment



Offer tailored event design and production, creating unique experiences with innovative solutions.

vibrationproduction.com
hello@vibrationproduction.com
vibrationproduction_



Turn ambitious briefs into unforgettable live events with creative production and a collaborative approach.

wiseproductions.co.uk
events@wiseproductions.co.uk
wise_productions

ENTERTAINMENT

ALR MUSIC

Curating exclusive, high-energy live entertainment for luxury events worldwide, offering bespoke performances that captivate and energise guests.

alrmusic.co.uk
info@alrmusic.co.uk
alrmusic



Specialise in transforming events into memorable experiences with a variety of entertainment options, including games, live acts, and photo booths.

clownfishevents.com
hello@clownfishevents.com
clownfishevents

ÉLAN ARTISTS

Creates bold, cultural, and unforgettable floral designs for high-end private parties, weddings, and exclusive events worldwide.

elanartists.com
fran@elanartists.com
elanartists



Offer tailored musical performances by nurturing and developing a diverse roster of artists to meet client needs.

euphonica.com
hello@euphonica.com
euphonicalive



Deliver bespoke DJ and live music experiences for weddings, corporate events, and parties, tailoring each performance to their clients' unique preferences.

musicalmovements.co.uk
info@musicalmovements.co.uk
musicalmovements



Deliver exceptional acts for various events, from corporate gatherings to weddings, with over 30 years of experience.

sternbergclarke.co.uk
adam@sternbergclarke.co.uk
sternbergclarke



Provide comprehensive event production services, including lighting, sound, and live entertainment, ensuring flawless execution.

velvetentertainment.net
artistmanagement@velvetentertainment.net
velvetentertainment

FLORISTS



AMIE BONE

Creates bold, cultural, and unforgettable floral designs for high-end private parties, weddings, and exclusive events worldwide.

amiebone.com
enquiries@amiebone.com
amieboneflowers



Sophistication and elegance define Bloomsbury Flowers, known for their timeless floral designs delivered across London and the UK.

bloomsburyflowers.co.uk
info@bloomsburyflowers.co.uk
bloomsburyflowerslondon

FLOWER & PRESS
LONDON

Specialise in sustainable, seasonal floral designs, repurposing flowers into artwork and stationery to minimise waste.

flowerandpress.com
info@flowerandpress.com
flowerandpress

hybrid

Known for their artistic and thoughtful floral designs, tailored to corporate, wedding, and private event clients across London.

hybridflowers.co.uk
info@hybridflowers.co.uk
hybrid.flowers



Luxurious, creative floral designs for events and weddings, blending seasonality with elegance and expertise.

lavendergreen.co.uk
info@lavendergreen.co.uk
lavendergreenflowers



Leading London-based luxury florist, renowned for creating elegant, seasonal floral arrangements for weddings, events, and corporate clients.

maryjanevaughan.co.uk
info@maryjanevaughan.co.uk
maryjanevaughan



Offers innovative, bespoke floral designs for weddings, events, and film productions, always delivering with a 'can do' attitude.

pinstripesandpeonies.com
flowers@pinstripesandpeonies.com
pandpflowers



Transform events with their unique, imaginative floral designs, blending artistry and botanical beauty for unforgettable experiences.

veeverscarter.com
info@veeverscarter.com
veeverscarter

FURNITURE



Provide unique, high-quality furniture hire for live events, TV, and the weddings market.

furnitureonthemove.co.uk
adam@furnitureonthemove.co.uk
furnitureonthemov



Offer stylish furniture and tableware hire, delivering seamless service for events of all sizes.

options-greathire.co.uk
welcome@options-greathire.co.uk
optionsgreathire



Specialise in portable bar hire, providing stylish cocktail bars for corporate events and weddings.

rhinobarhire.com
david@rhinobarhire.com
rhinobarhire



Provide stylish lounge furniture, mobile bars, and accessories, seamlessly combining with production and entertainment services.

velvetliving.co.uk
info@velvetliving.co.uk
velvetliving



Specialise in event furniture and catering equipment hire, offering reliable, high-quality products for all event types.

yahire.com
david@yahire.com
yahireltd

SUSTAINABILITY

Local and seasonal sourcing goes hand in hand with reducing food miles and our collective carbon footprint. We are committed to buying products of the highest quality and as a fresh food company over 80% of the produce we source is brought in fresh. We focus on seasonality and sustainability and where possible buy food that has been produced in the UK.

Recognising food waste is a huge contributor to climate change. Moving Venue have made a pledge to reduce their food waste by 50% by 2025, we will achieve this by taking a considered approach to deliver meaningful step changes over time.



90% of our Leaf Marque assured fruit and vegetables are sourced in Britain.

Our meat is Red Tractor assured produced and 100% sourced in Britain.

All our products are sourced from sustainable, certified, ethical trade or Fairtrade sources in line with the BRC Global standard.

We only use fish from sustainable stocks, promoting fish recommended by the Marine Conservation Society (MCS).

Every tonne of food waste is recycled by anaerobic digestion and as an alternative to landfill, prevents approx. 1.0 tonne of CO2 entering the atmosphere.



Nestled in the heart of Covent Garden, 60 Great Queen Street offers a prime location amidst London's iconic landmarks, luxury hotels, and excellent transport links. Surrounded by boutique shops, famous theatres, and iconic sights, it provides effortless accessibility with the lively charm of the capital, making it an ideal location for your event.

LOCATION

60 Great Queen Street
WC2B 5AZ

Walking distance from:	
Holborn Station	4 min
Covent Garden Station	4 min
Leicester Square Station	8 min
Waterloo Station	24 min
Uber Boat at Embankment	17 min

From Heathrow Airport	
By train	1 hour
By car	1 hour

PLANNING AN EVENT AT 60 GREAT QUEEN STREET?

**OUR DEDICATED TEAM IS HERE TO
ASSIST YOU EVERY STEP OF THE WAY.**

Whether you're hosting a grand celebration,
corporate gathering, or intimate occasion,
we'll tailor every detail to your vision.

Contact us today to explore availability,
schedule a site visit, or discuss bespoke
packages. Let us help you bring your event to
life in this iconic Art Deco setting.



020 7438 2032



sales@60greatqueenst.co.uk



60 Great Queen St, London WC2B 5AZ



[@60greatqueenst](https://www.instagram.com/60greatqueenst)



[60-great-queen-street](https://www.linkedin.com/company/60-great-queen-street)

60
GREAT
QUEEN
ST.



60 GREAT QUEEN ST.

60GREATQUEENST.CO.UK